



Floating Air™ Ultra™ Single-Zone DUCTLESS MINI-SPLIT SYSTEMS

WALL-MOUNTED, SINGLE-ZONE HEAT PUMPS

| | | |
|--------------|--------------|---------------|
| PURCHASER | P.O. # | DATE |
| PROJECT | LOCATION | |
| ENGINEER | ARCHITECT | |
| SUBMITTED BY | FOR APPROVAL | FOR REFERENCE |

| ITEM | PLAN DESIGNATION | QUANTITY | COOLING BTU/H | VOLTAGE | RUUD MODEL |
|------|------------------|----------|---------------|---------|------------|
| | | | | | |
| | | | | | |
| | | | | | |
| | | | | | |
| | | | | | |

Key Features

Indicates sustainability feature

- **FastPro®** design for the fastest access for maintenance of any wall-mounted ductless systems
- All models ENERGY STAR® and ENERGY STAR® Cold Climate Heat Pump certified
- **Precision Inverter®** technology (variable speed compressor)
- Extreme cold climate heat pump performance: 100% of rated capacity at 5°F
- Extreme low ambient heat pump operation
- Easy-to-read temperature display
- Wireless remote control included
- Soft-Start™ compressor
- BLDC motor
- Built-in Wi-Fi
- Sleep mode
- Ultra quiet operation

FEATURING OUR **FastPro®** DESIGN

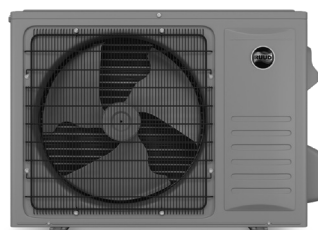


FAHFW09A3D, FAHW12A3D,
FAHFW18A3D, FAHFW24A3D

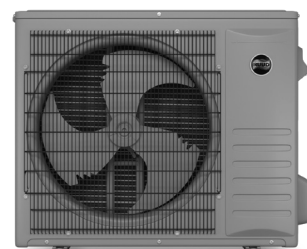


HIGH EFFICIENCY HEATING & COOLING

- Low ambient heat pump operation down to -22°F
- Low ambient cooling operation down to 5°F
- Low temperature compressor start-up protection



FPHFR09A3D, FPHFR12A3D



FPHFR18A3D, FPHFR24A3D



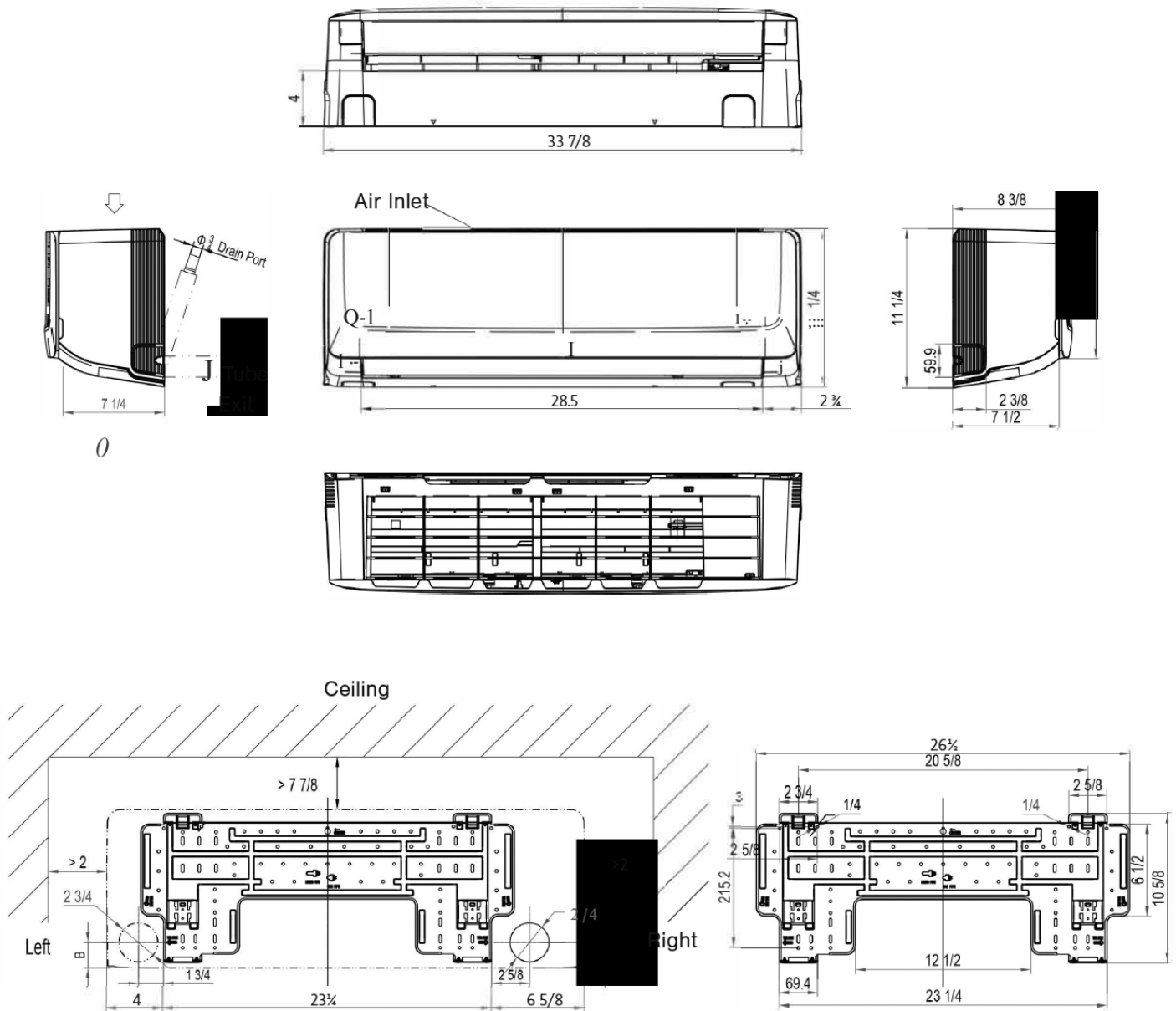
FLOATING AIR™ ULTRA™ | SINGLE-ZONE | WALL-MOUNTED HEAT PUMPS

| MODEL | Model Set | Unit | FXHW093D | FXHW123D | FXHW183D | FXHW243D |
|-----------------------------------|--|-------------|----------------------|---------------------|----------------------|----------------------|
| | Indoor Model | | FAHFW09A3D | FAHFW12A3D | FAHFW18A3D | FAHFW24A3D |
| | Outdoor Model | | FPHFR09A3D | FPHFR12A3D | FPHFR18A3D | FPHFR24A3D |
| | Power Supply | | 208V/230V~, 60Hz, 1P | | | |
| COOLING | ENERGY STAR® Standard | Y/N | Y | Y | Y | Y |
| | ENERGY STAR – Cold Climate | Y/N | Y | Y | Y | Y |
| | Rated Capacity @ 95°F | Btu/h | 9,000 | 12,000 | 18,000 | 24,000 |
| | Cooling Capacity Range (Min. –Max.) | Btu/h | 4,600–12,700 | 4,600–12,700 | 7,800–22,000 | 10,000–28,000 |
| | EER2 @ 95°F | Btu/h/W | 12.00 | 12.00 | 12.00 | 12.00 |
| HEATING | SEER2 | Btu/h/W | 22.00 | 22.00 | 21.00 | 21.00 |
| | Cooling Operating Range (Min. –Max.) | °F | 5–125 | 5–125 | 5–125 | 5–125 |
| | Rated Capacity @ 47°F | Btu/h | 9,000 | 12,000 | 18,000 | 24,000 |
| | Heating Capacity Range (Min. –Max.) | Btu/h | 5,500–16,000 | 5,500–16,000 | 7,800–23,000 | 6,700–30,000 |
| | COP @ 47°F | W/W | 12.00 | 12.00 | 3.66 | 3.52 |
| INDOOR AIRFLOW | COP @ 5°F | W/W | 1.80 | 1.80 | 1.80 | 1.80 |
| | HSPF2 | Btu/h/W | 10.50 | 10.50 | 10.00 | 10.00 |
| | Rated Capacity Heating @ 17°F (-8.3°C) | Btu/h | 6,500 | 8,700 | 14,100 | 19,100 |
| | Maximum Heating Capacity @ 5°F (-15°C) | Btu/h | 12,000 | 12,000 | 18,000 | 24,000 |
| | Maximum Heating Capacity @ -13°F (-25°C) | Btu/h | 8,400 | 8,400 | 12,600 | 16,200 |
| INDOOR FAN MOTOR | Heating Operating Range (Min. –Max.) | °F | -22–75 | -22–75 | -22–75 | -22–75 |
| | Air Circulation (Max./H/M/L) | ft³ CFM | 382/341/294/247 | 394/365/312/253 | 647/588/482/382 | 706/647/559/441 |
| | Sound Rating – Indoor (Max./H/M/L/Quiet) | dB(A) | 42/39/37/35/32 | 42/39/37/35/32 | 48/45/41/39/36 | 50/48/43/41/39 |
| | Output | W | 25 | 25 | 35 | 35 |
| | Speed (High/Med/Low) | r/min | 1,100/938/800 | 1,154/992/800 | 1,100/960/800 | 1,200/1,040/880 |
| OUTDOOR AIRFLOW | Air Circulation (High) for Outdoor | ft³ CFM | 1,354 | 1,354 | 1,853 | 2,235 |
| | Sound Rating – Outdoor | dB(A) | 64.0 | 64.0 | 68.0 | 71.0 |
| | Output | W | 40 | 40 | 60 | 110 |
| | Speed (High) | r/min | 880 | 880 | 880 | 870 |
| | | | | | | |
| ELECTRICAL | Rated Current | Cooling (A) | 3.9 | 4.5 | 6.7 | 8.9 |
| | | Cooling (W) | 750 | 1,000 | 1,500 | 2,000 |
| | | Heating (A) | 3.9 | 4.5 | 6.4 | 8.5 |
| | | Heating (W) | 750 | 1,000 | 1,440 | 2,069 |
| | MOP (Rating of Overcurrent Protective Device) | A | 20 | 20 | 25 | 30 |
| REFRIGERATION (R-454B) | MCA (Minimum Circuit Ampacity) | A | 12.0 | 12.0 | 16.0 | 22.0 |
| | Communication Wire Size and Type | | 4 × 14AWG | 4 × 14AWG | 4 × 14AWG | 4 × 14AWG |
| | Moisture Removal | pints/hr | 2.4 | 3.7 | 4.2 | 6.3 |
| | Refrigerant Charge Volume | oz. | 38.1 | 38.1 | 56.4 | 74.1 |
| | Liquid Pipe | in. | 1/4 | 1/4 | 1/4 | 3/8 |
| INDOOR UNIT DIMENSIONS & WEIGHTS | Gas Pipe | in. | 3/8 | 3/8 | 1/2 | 5/8 |
| | Max. Pipe Length (Total) | ft. | 130.0 | 130.0 | 150.0 | 165.0 |
| | Max. Elevation (Indoor Units Higher Than Outdoor Unit) | ft. | 50.0 | 50.0 | 80.0 | 100.0 |
| | Pre-charge Pipe Length | ft. | 25.0 | 25.0 | 25.0 | 25.0 |
| | Additional Refrigerant Charge per Foot After 25 ft. | oz./ft. | 0.16 | 0.16 | 0.16 | 0.38 |
| INDOOR UNIT DIMENSIONS & WEIGHTS | Dimension (W×H×D) | in. | 33-7/8×11-2/8×8-4/8 | 33-7/8×11-2/8×8-4/8 | 45-2/8×13-2/8×10-1/8 | 45-2/8×13-2/8×10-1/8 |
| | | mm | 860×285×216 | 860×285×216 | 1,148×336×256 | 1,148×336×256 |
| | Packing (L×H×W) | in. | 36-5/8×15×11-2/8 | 36-5/8×15×11-2/8 | 47-7/8×16-1/8×13 | 47-7/8×16-1/8×13 |
| | | mm | 930×380×285 | 930×380×285 | 1,215×410×330 | 1,215×410×330 |
| | Net Weight | lbs. | 22.1 | 22.05 | 34.2 | 34.2 |
| OUTDOOR UNIT DIMENSIONS & WEIGHTS | | kg | 10.0 | 10.0 | 15.5 | 15.5 |
| | Shipping Weight | lbs. | 26.5 | 26.5 | 39.7 | 39.7 |
| | | kg | 12.0 | 12.0 | 18.0 | 18.0 |
| | Dimension (W×H×D) | in. | 31-7/8×22-7/8×11 | 31-7/8×22-7/8×11 | 33-7/8×26-3/8×12-1/4 | 35-3/8×29-1/2×13-3/8 |
| | | mm | 810×580×280 | 810×580×280 | 860×670×310 | 900×750×340 |
| OUTDOOR UNIT DIMENSIONS & WEIGHTS | Packing (L×H×W) | in. | 37×16-1/2×25-1/4 | 37×16-1/2×25-1/4 | 39×17-3/4×28-3/4 | 41×32-5/8×18-1/8 |
| | | mm | 940×420×640 | 940×420×640 | 990×450×730 | 1,040×830×460 |
| | Net Weight | lbs. | 79.4 | 79.4 | 97.0 | 116.8 |
| | | kg | 36.0 | 36.0 | 46.0 | 53.0 |
| | Shipping Weight | lbs. | 86.0 | 86.0 | 105.8 | 125.7 |
| | | kg | 39.0 | 39.0 | 50.0 | 57.0 |



DIMENSIONAL DRAWINGS: WALL-MOUNTED HEAT PUMPS

INDOOR UNITS/ FAHFW09A3D, FAHFW12A3D

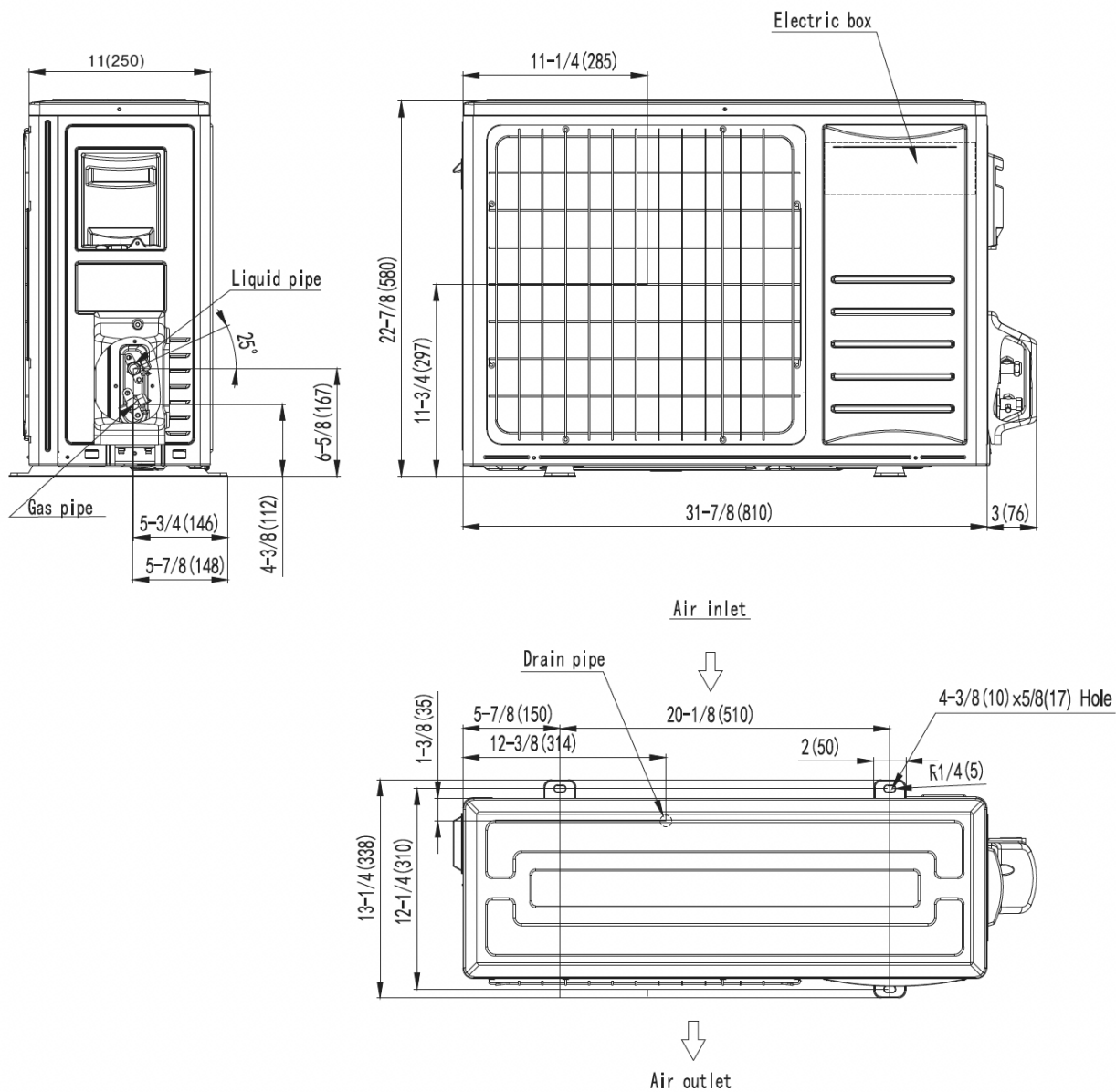


| Model | W | H | D |
|------------------------|--------------------|--------------------|-------------------|
| FAHFW09A3D, FAHFW12A3D | $33 \frac{7}{8}$ " | $11 \frac{2}{8}$ " | $8 \frac{3}{8}$ " |

UNITS: INCHES

DIMENSIONAL DRAWINGS: OUTDOOR HEAT PUMPS

OUTDOOR UNITS/ FPHFR09A3D, FPHFR12A3D

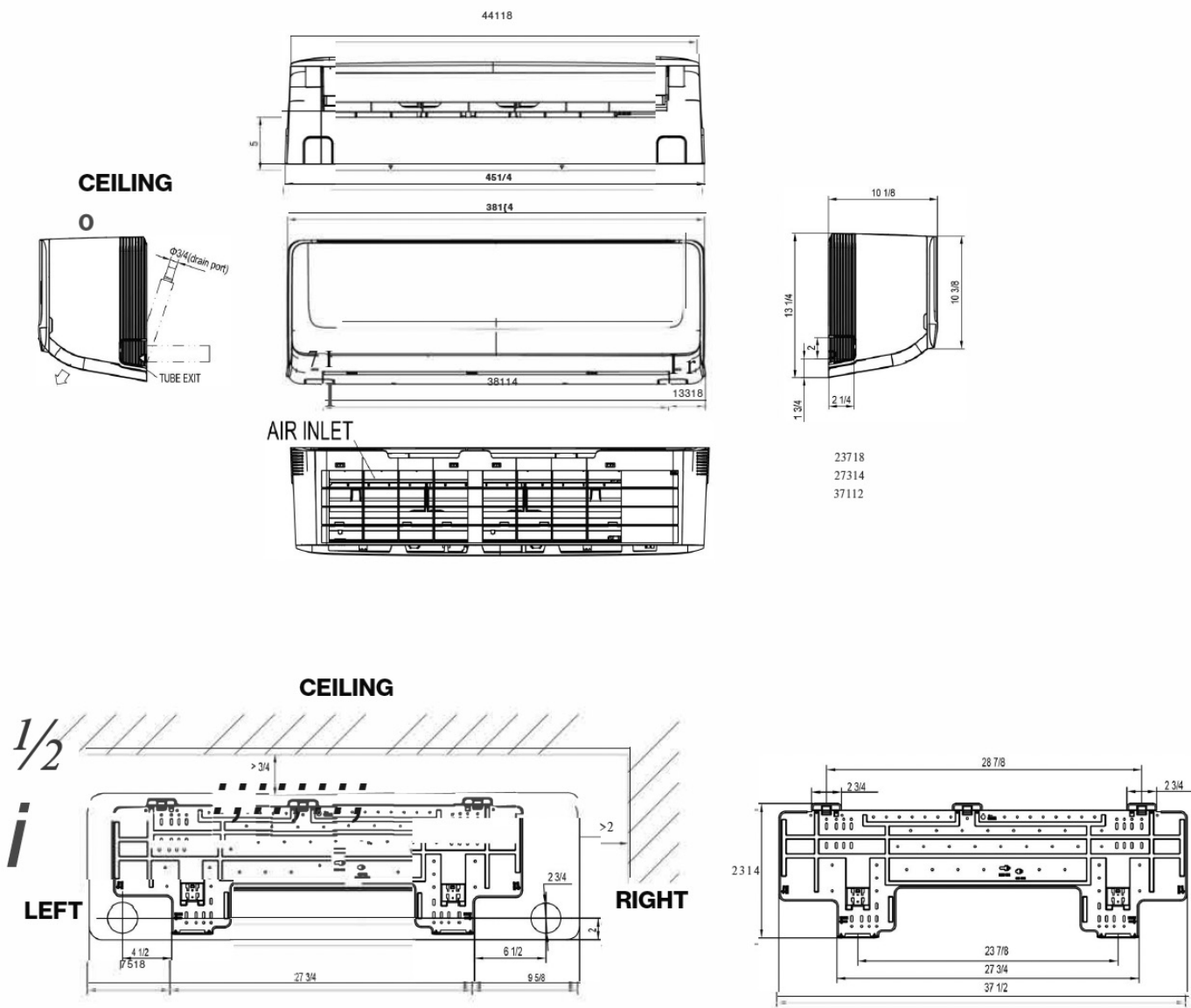


| Model | W | H | D |
|-------------------------------|---------|---------|---------|
| FPHFR09A3D, FPHFR12A3D | 31 7/8" | 22 7/8" | 12 2/8" |

UNITS: INCHES

DIMENSIONAL DRAWINGS: WALL-MOUNTED HEAT PUMPS

INDOOR UNITS/ FAHFW18A3D, FAHFW24A3D

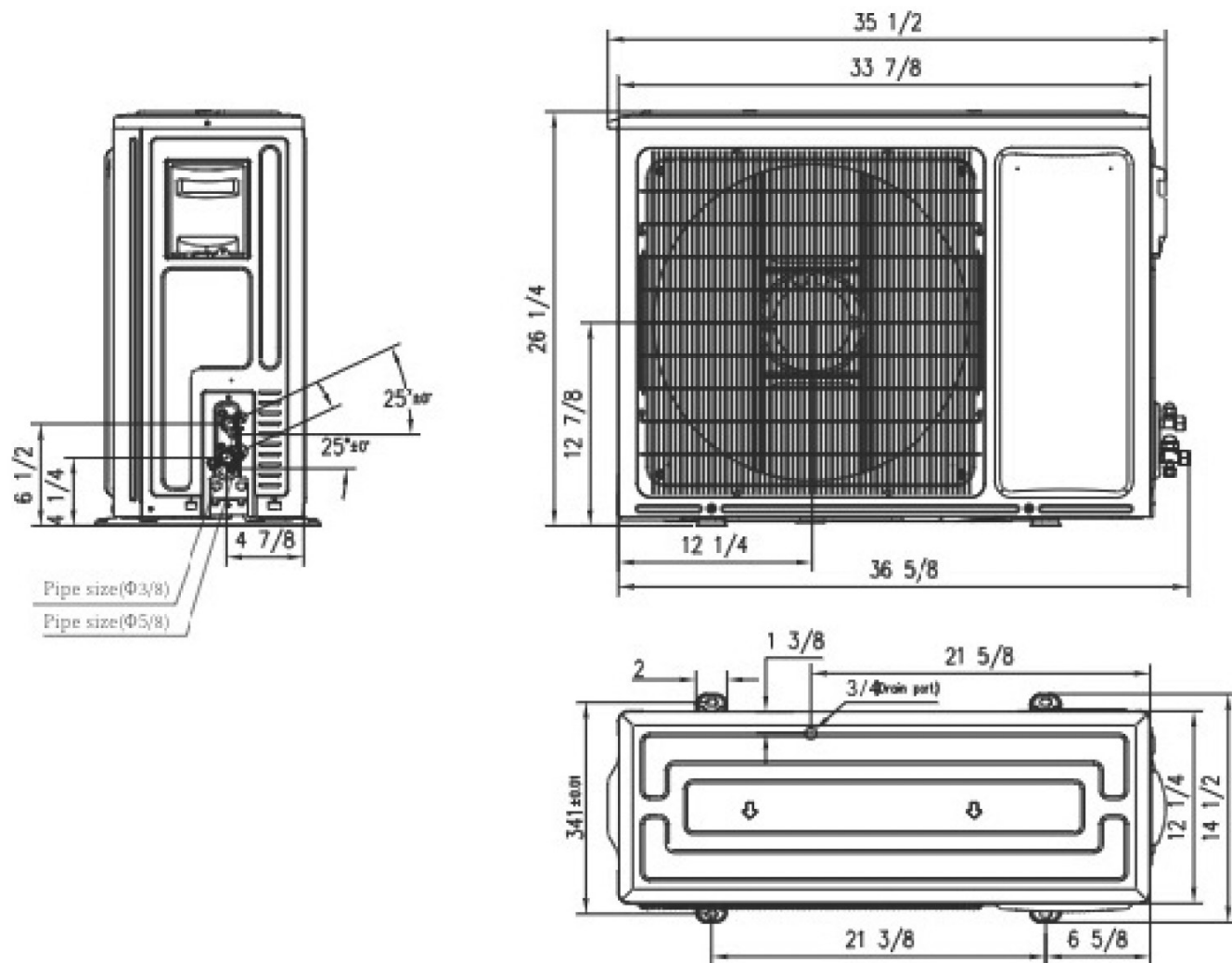


| Model | W | H | D |
|------------------------|---------|---------|---------|
| FAHFW18A3D, FAHFW24A3D | 45 1/4" | 10 1/8" | 13 1/4" |

UNITS: INCHES

DIMENSIONAL DRAWINGS: OUTDOOR HEAT PUMPS

OUTDOOR UNITS/ FPHFR18A3D

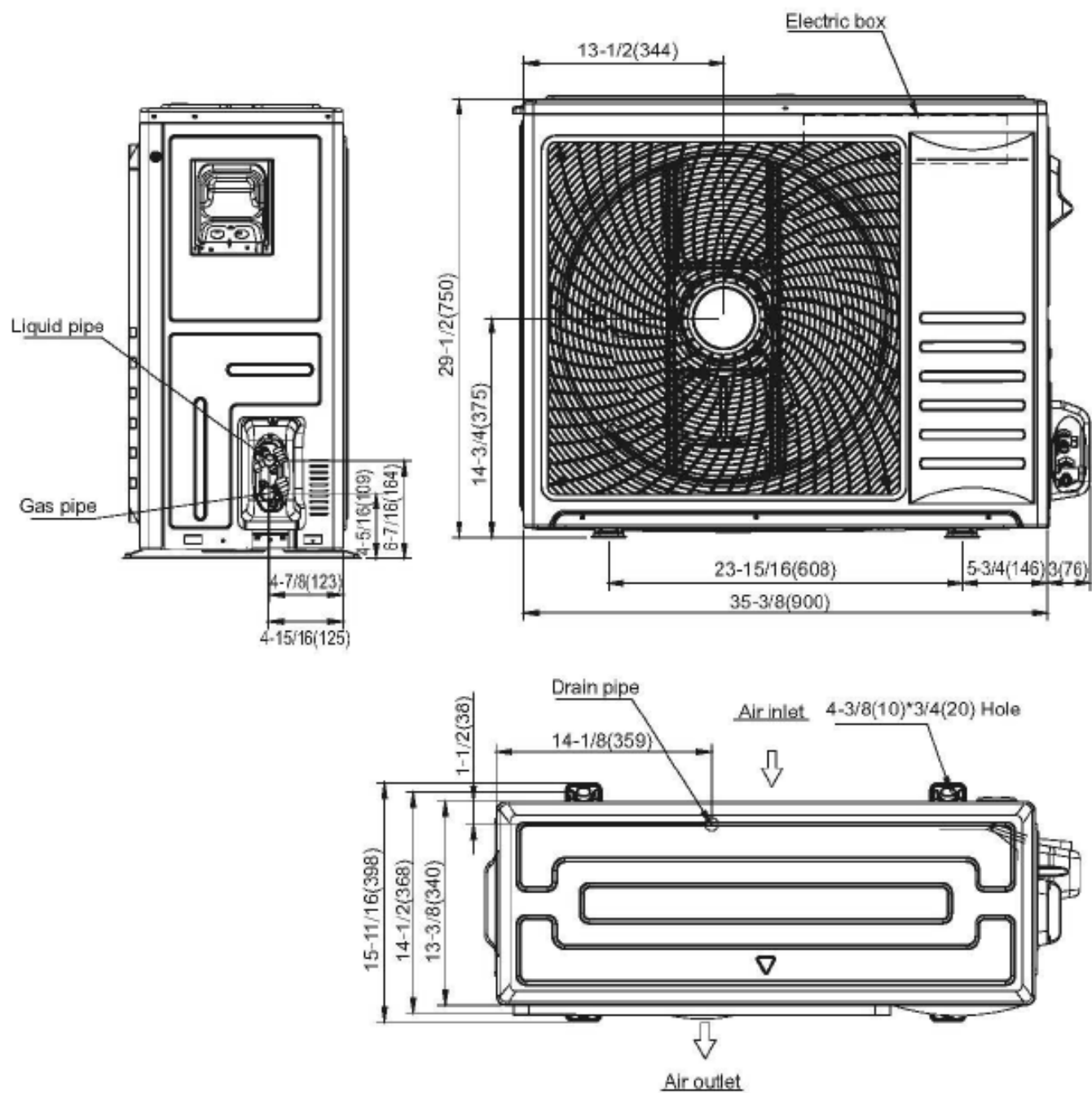


| Model | W | H | D |
|-------------------|---------|---------|---------|
| FPHFR18A3D | 33 7/8" | 26 2/8" | 12 2/8" |

UNITS: INCHES

DIMENSIONAL DRAWINGS: OUTDOOR HEAT PUMPS

OUTDOOR UNITS/ FPHFR24A3D



| Model | W | H | D |
|-------------------|---------|---------|---------|
| FPHFR24A3D | 35 5/8" | 29 1/2" | 13 3/8" |

UNITS: INCHES

ACCESSORIES



FPWC1 – Optional hard-wired controller for Floating Air wall-mounted and cassette indoor models. Included with concealed ducted models. Not compatible with AHU indoor models. See your Ruud representative for options.



FreshAir Purifier APWM1 by iWave® – Optional accessory for all wall-mounted duct-less models that kills mold, bacteria and viruses—while effectively removing odors and VOCs.



DSSXEMWRTA4 – Optional wireless energy management thermostat with occupancy sensor. For Floating Air Pro, single- and multi-zone models. See your Ruud representative for options.



ADS01 – Field-installed A2L sensor for Floating Air R-454B wall-mounted applications.

ADS02 – Field-installed A2L sensor for Floating Air R-32 wall-mounted applications. See Installation and Operational Manual for additional information & requirements.