



Floating Air™ *Prestige*® Single-Zone DUCTLESS MINI-SPLIT SYSTEMS

WALL-MOUNTED, SINGLE-ZONE HEAT PUMPS

PURCHASER	P.O. #	DATE
PROJECT	LOCATION	
ENGINEER	ARCHITECT	
SUBMITTED BY	FOR APPROVAL	FOR REFERENCE

ITEM	PLAN DESIGNATION	QUANTITY	COOLING BTU/H	VOLTAGE	RHEEM MODEL

Key Features

Indicates sustainability feature

- **FastPro**® design for the fastest access for maintenance of any wall-mounted ductless systems
- All models ENERGY STAR® and ENERGY STAR® Cold Climate Heat Pump certified
- **Precision Inverter**® technology (variable speed compressor)
- Extreme cold climate heat pump performance: 100% of rated capacity at 5°F
- Extreme low ambient heat pump operation
- Easy-to-read temperature display
- Wireless remote control included
- Soft-Start™ compressor
- BLDC motor
- Built-in Wi-Fi
- Sleep mode
- Ultra quiet operation

FEATURING OUR **FastPro**® DESIGN

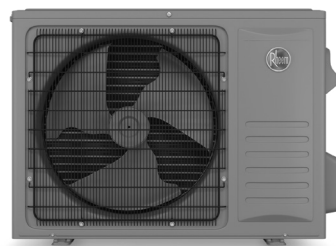


FAHFW09A3D, FAHW12A3D,
FAHFW18A3D, FAHFW24A3D



HIGH EFFICIENCY HEATING & COOLING

- Low ambient heat pump operation down to -22°F
- Low ambient cooling operation down to 5°F
- Low temperature compressor start-up protection



FPHFR09A3D, FPHFR12A3D



FPHFR18A3D, FPHFR24A3D



FLOATING AIR™ *PRESTIGE®* | SINGLE-ZONE | WALL-MOUNTED HEAT PUMPS

MODEL	Model Set	Unit	FXHW093D	FXHW123D	FXHW183D	FXHW243D
	Indoor Model		FAHFW09A3D	FAHFW12A3D	FAHFW18A3D	FAHFW24A3D
	Outdoor Model		FPHFR09A3D	FPHFR12A3D	FPHFR18A3D	FPHFR24A3D
	Power Supply	V/Hz/ph	208V/230V~, 60Hz, 1P			
COOLING	ENERGY STAR® Standard	Y/N	Y	Y	Y	Y
	ENERGY STAR – Cold Climate	Y/N	Y	Y	Y	Y
	Rated Capacity @ 95°F	Btu/h	9,000	12,000	18,000	24,000
	Cooling Capacity Range (Min.–Max.)	Btu/h	4,600–12,700	4,600–12,700	7,800–22,000	10,000–28,000
	EER2 @ 95°F	Btu/h/W	12.00	12.00	12.00	12.00
HEATING	SEER2	Btu/h/W	22.00	22.00	21.00	21.00
	Cooling Operating Range (Min.–Max.)	°F	5–125	5–125	5–125	5–125
	Rated Capacity @ 47°F	Btu/h	9,000	12,000	18,000	24,000
	Heating Capacity Range (Min.–Max.)	Btu/h	5,500–16,000	5,500–16,000	7,800–23,000	6,700–30,000
	COP @ 47°F	W/W	12.00	12.00	3.66	3.52
INDOOR AIRFLOW	COP @ 5°F	W/W	1.80	1.80	1.80	1.80
	HSPF2	Btu/h/W	10.50	10.50	10.00	10.00
	Rated Capacity Heating @ 17°F (-8.3°C)	Btu/h	6,500	8,700	14,100	19,100
	Maximum Heating Capacity @ 5°F (-15°C)	Btu/h	12,000	12,000	18,000	24,000
	Maximum Heating Capacity @ -13°F (-25°C)	Btu/h	8,400	8,400	12,600	16,200
INDOOR FAN MOTOR	Heating Operating Range (Min.–Max.)	°F	-22–75	-22–75	-22–75	-22–75
	Air Circulation (Max./H/M/L)	ft³ CFM	382/341/294/247	394/365/312/253	647/588/482/382	706/647/559/441
	Sound Rating – Indoor (Max./H/M/L/Quiet)	dB(A)	42/39/37/35/32	42/39/37/35/32	48/45/41/39/36	50/48/43/41/39
	Output	W	25	25	35	35
	Speed (High/Med/Low)	r/min	1,100/938/800	1,154/992/800	1,100/960/800	1,200/1,040/880
OUTDOOR AIRFLOW	Air Circulation (High) for Outdoor	ft³ CFM	1,354	1,354	1,853	2,235
	Sound Rating – Outdoor	dB(A)	64.0	64.0	68.0	71.0
	Output	W	40	40	60	110
	Speed (High)	r/min	880	880	880	870
ELECTRICAL	Rated Current					
		Cooling (A)	3.9	4.5	6.7	8.9
		Cooling (W)	750	1,000	1,500	2,000
		Heating (A)	3.9	4.5	6.4	8.5
		Heating (W)	750	1,000	1,440	2,069
REFRIGERATION (R-454B)	MOP (Rating of Overcurrent Protective Device)	A	20	20	25	30
	MCA (Minimum Circuit Ampacity)	A	12.0	12.0	16.0	22.0
	Communication Wire Size and Type		4 × 14AWG	4 × 14AWG	4 × 14AWG	4 × 14AWG
	Moisture Removal	pints/hr	2.4	3.7	4.2	6.3
	Refrigerant Charge Volume	oz.	38.1	38.1	56.4	74.1
INDOOR UNIT DIMENSIONS & WEIGHTS	Liquid Pipe	in.	1/4	1/4	1/4	3/8
	Gas Pipe	in.	3/8	3/8	1/2	5/8
	Max. Pipe Length (Total)	ft.	130.0	130.0	150.0	165.0
	Max. Elevation (Indoor Units Higher Than Outdoor Unit)	ft.	50.0	50.0	80.0	100.0
	Pre-charge Pipe Length	ft.	25.0	25.0	25.0	25.0
OUTDOOR UNIT DIMENSIONS & WEIGHTS	Additional Refrigerant Charge per Foot After 25 ft.	oz./ft.	0.16	0.16	0.16	0.38
	Dimension (W×H×D)	in.	33-7/8×11-2/8×8-4/8	33-7/8×11-2/8×8-4/8	45-2/8×13-2/8×10-1/8	45-2/8×13-2/8×10-1/8
		mm	860×285×216	860×285×216	1,148×336×256	1,148×336×256
	Packing (L×H×W)	in.	36-5/8×15×11-2/8	36-5/8×15×11-2/8	47-7/8×16-1/8×13	47-7/8×16-1/8×13
		mm	930×380×285	930×380×285	1,215×410×330	1,215×410×330
INDOOR UNIT DIMENSIONS & WEIGHTS	Net Weight	lbs.	22.1	22.05	34.2	34.2
		kg	10.0	10.0	15.5	15.5
	Shipping Weight	lbs.	26.5	26.5	39.7	39.7
		kg	12.0	12.0	18.0	18.0
OUTDOOR UNIT DIMENSIONS & WEIGHTS	Dimension (W×H×D)	in.	31-7/8×22-7/8×11	31-7/8×22-7/8×11	33-7/8×26-3/8×12-1/4	35-3/8×29-1/2×13-3/8
		mm	810×580×280	810×580×280	860×670×310	900×750×340
	Packing (L×H×W)	in.	37×16-1/2×25-1/4	37×16-1/2×25-1/4	39×17-3/4×28-3/4	41×32-5/8×18-1/8
		mm	940×420×640	940×420×640	990×450×730	1,040×830×460
	Net Weight	lbs.	79.4	79.4	97.0	116.8
OUTDOOR UNIT DIMENSIONS & WEIGHTS		kg	36.0	36.0	46.0	53.0
	Shipping Weight	lbs.	86.0	86.0	105.8	125.7
		kg	39.0	39.0	50.0	57.0

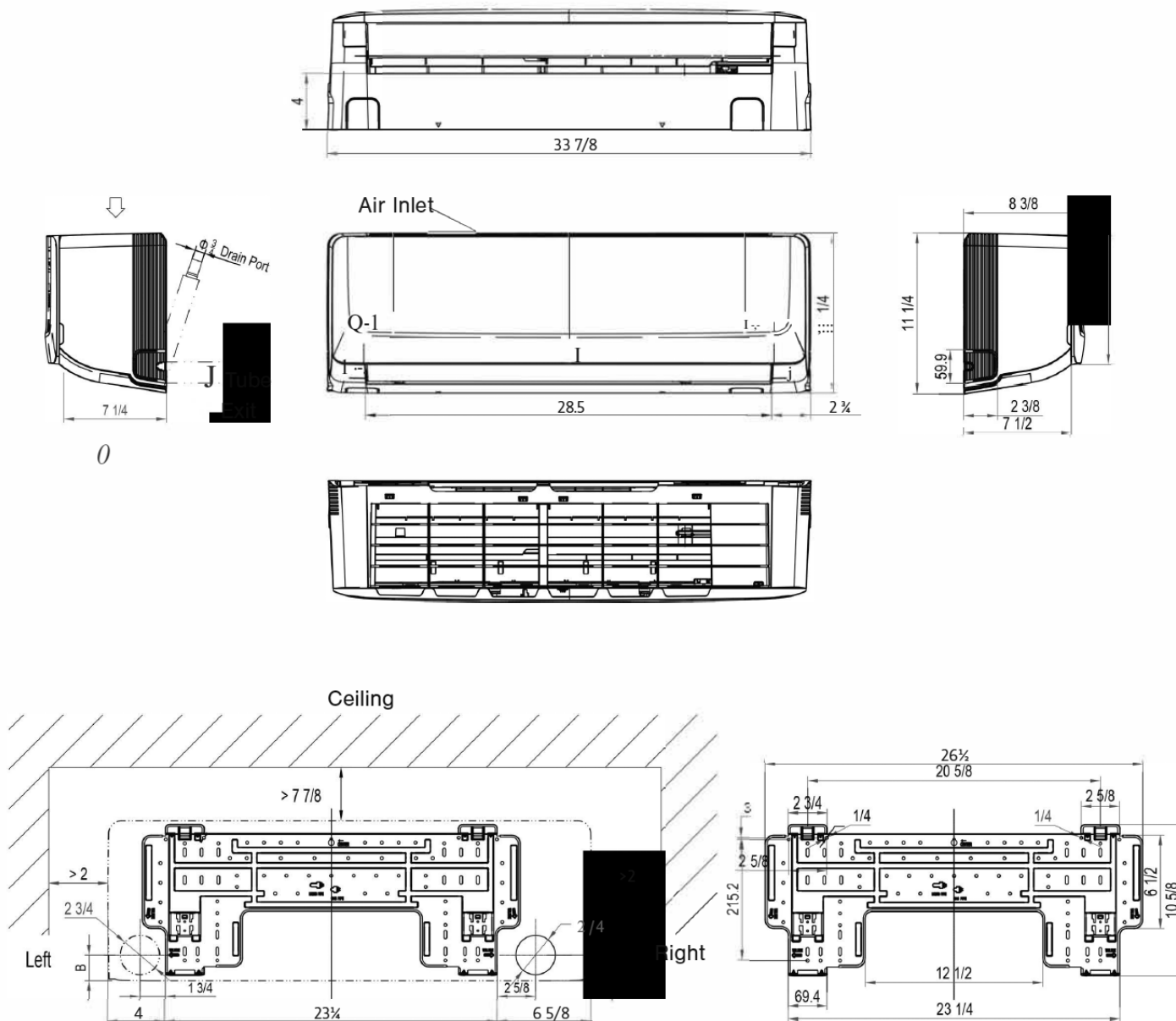


Standard

With Registration

DIMENSIONAL DRAWINGS: WALL-MOUNTED HEAT PUMPS

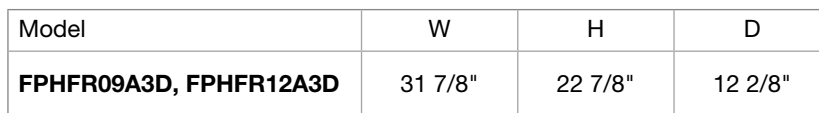
INDOOR UNITS/ FAHFW09A3D, FAHFW12A3D



Model	W	H	D
FAHFW09A3D, FAHFW12A3D	$33 \frac{7}{8}$"	$11 \frac{1}{4}$"	$8 \frac{3}{8}$"

UNITS: INCHES

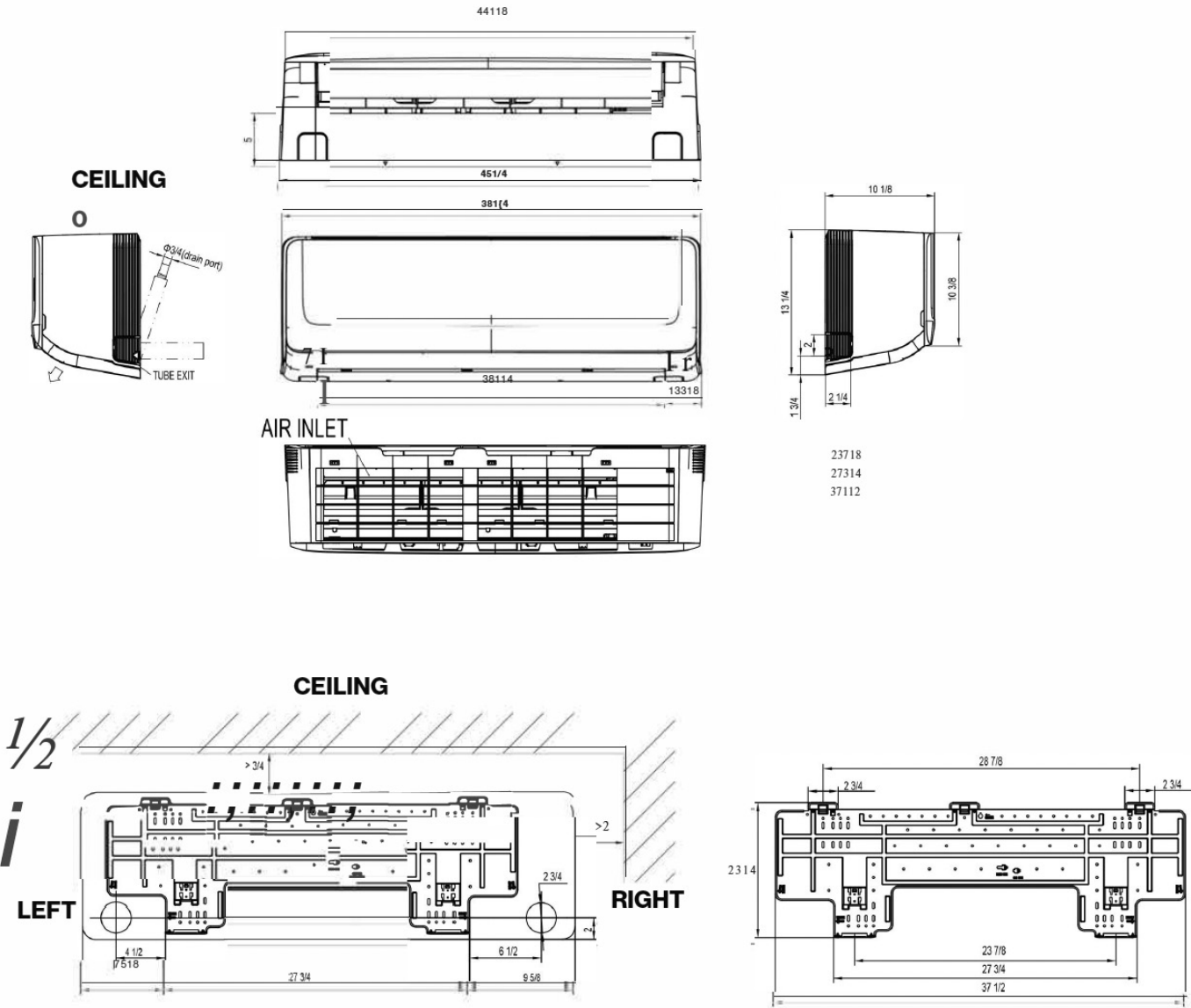
OUTDOOR UNITS/ FPHFR09A3D, FPHFR12A3D



4

DIMENSIONAL DRAWINGS: WALL-MOUNTED HEAT PUMPS

INDOOR UNITS/ FAHFW18A3D, FAHFW24A3D

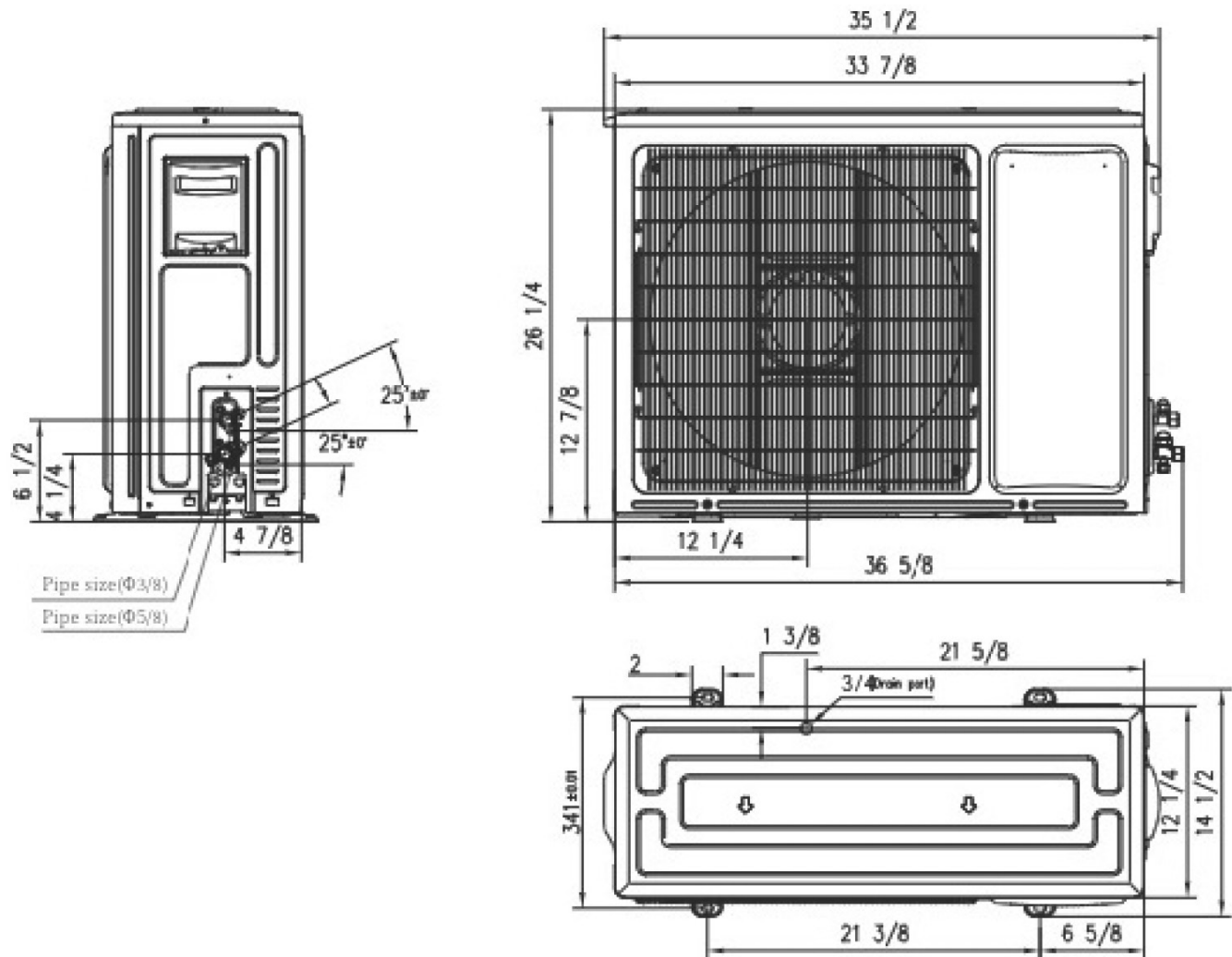


Model	W	H	D
FAHFW18A3D, FAHFW24A3D	45 1/4"	10 1/8"	13 1/4"

UNITS: INCHES

DIMENSIONAL DRAWINGS: OUTDOOR HEAT PUMPS

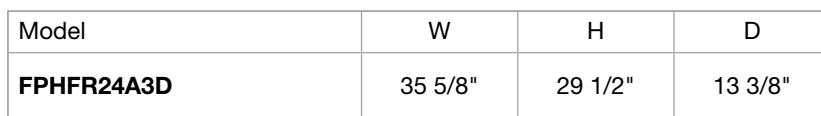
OUTDOOR UNITS/ FPHFR18A3D



Model	W	H	D
FPHFR18A3D	33 7/8"	26 2/8"	12 2/8"

UNITS: INCHES

OUTDOOR UNITS/ FPHFR24A3D



7

ACCESSORIES



FPWC1 – Optional hard-wired controller for Floating Air wall-mounted and cassette indoor models. Included with concealed ducted models. Not compatible with AHU indoor models. See your Rheem representative for options.



FreshAir Purifier APWM1 by iWave® – Optional accessory for all wall-mounted ductless models that kills mold, bacteria and viruses—while effectively removing odors and VOCs.



DSSXEMWRTA4 – Optional wireless energy management thermostat with occupancy sensor. For Floating Air Pro, single- and multi-zone models. See your Rheem representative for options.



ADS01 – Field-installed A2L sensor for Floating Air R-454B wall-mounted applications.

ADS02 – Field-installed A2L sensor for Floating Air R-32 wall-mounted applications. See Installation and Operational Manual for additional information & requirements.