

# Installation Instructions

## DRAIN PAN

**For VHA18, VHA24 and VRP07 units only.**

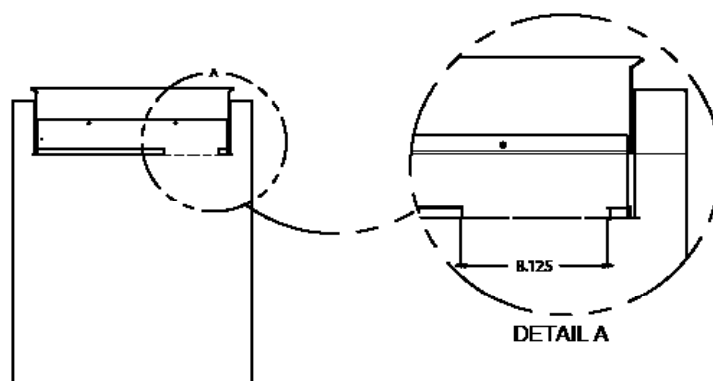
Please read these instructions completely before attempting installation.

**NOTE:** This drain pan must be installed with all VHA18 and VHA24 units manufactured after September 2019 (model number ends with "RTP" and "RTQ") and VRP07 units.

### STEP 1: CUT OPENING IN GASKET

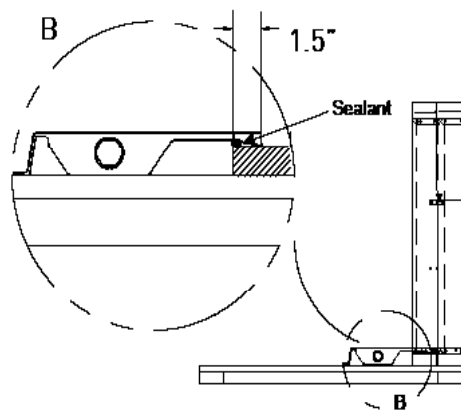
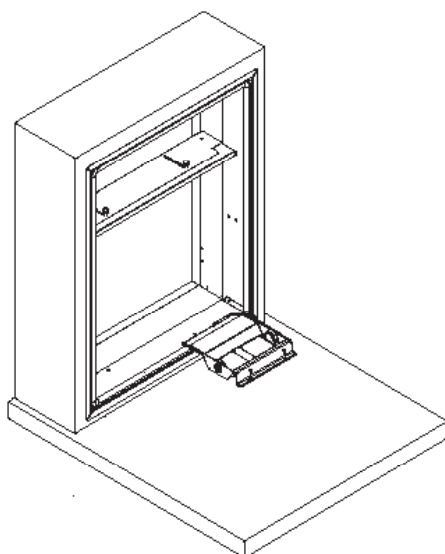
Remove an 8 1/8" portion of the weather seal gasket from the bottom right surface of the plenum.

To remove: Cut the gasket in the lower right corner of the plenum. Then make a second cut 8 1/8" from the right corner. The gasket should peel away from the plenum leaving a clean mounting surface (See detail A).



### STEP 2: SEAL AND SET PAN

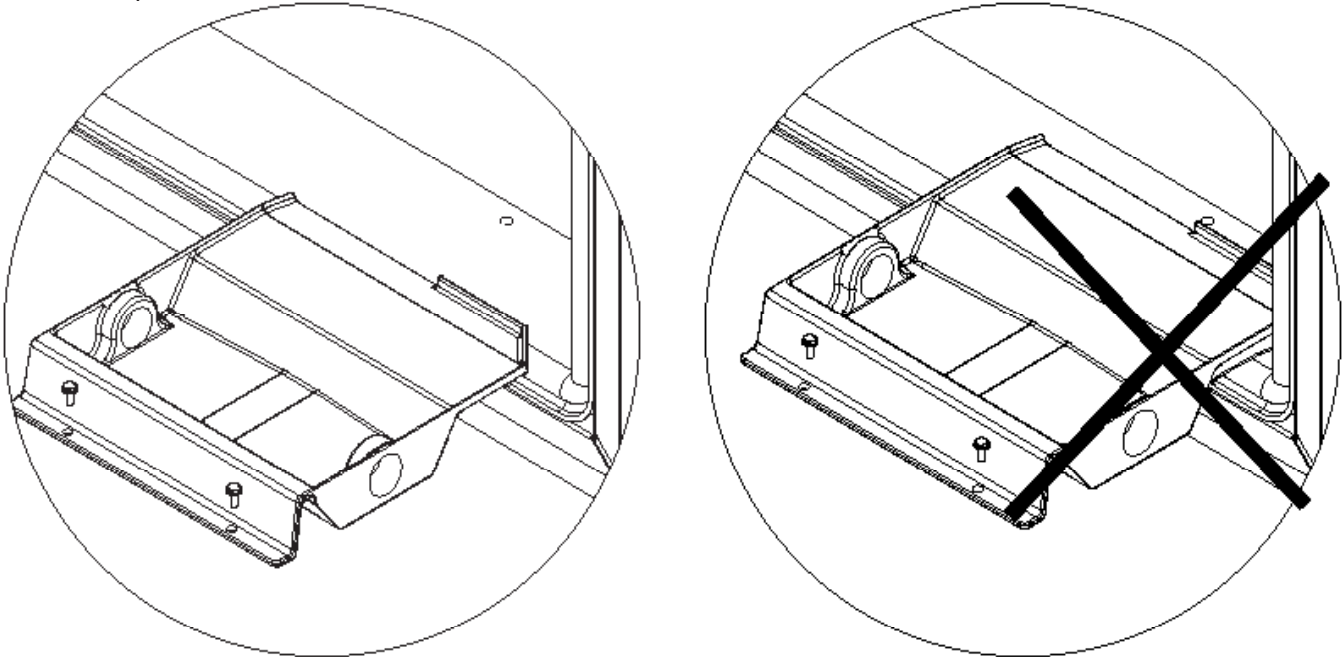
Prior to placing the drain pan into the opening run a 1/4" bead of sealant the entire width of the removed gasket. The pan should be placed against the right edge of the plenum and the secondary overflow lip inserted into the plenum **NO DEEPER THAN 1.5 INCHES** to prevent water leaks (See Detail B).



### STEP 3: INSTALL DRAIN PAN

Ensure that the drain pan is not inserted beyond 1.5 inches into the sleeve. The trough should NOT be flush with the 3/4" flange at the base of the plenum. Attach the drain pan to the closet floor with the appropriate field supplied hardware.

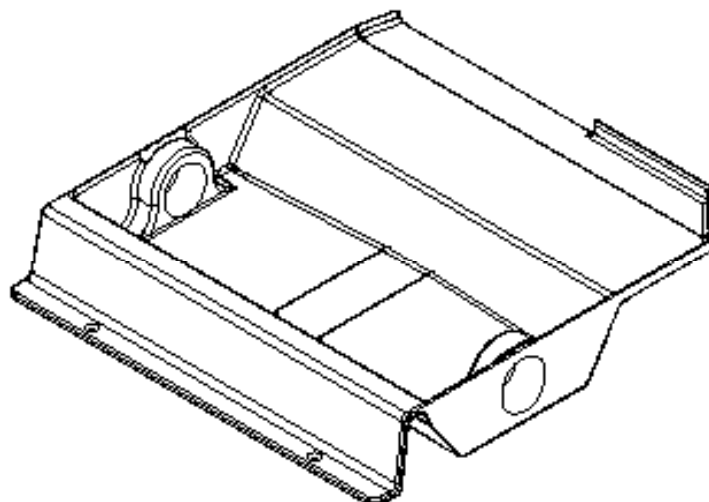
**IMPORTANT** - To prevent water leaks use only the factory supplied mounting holes. **NEVER** make penetrations in the drain pan itself.



### STEP 4: INSTALL DRAIN PLUG

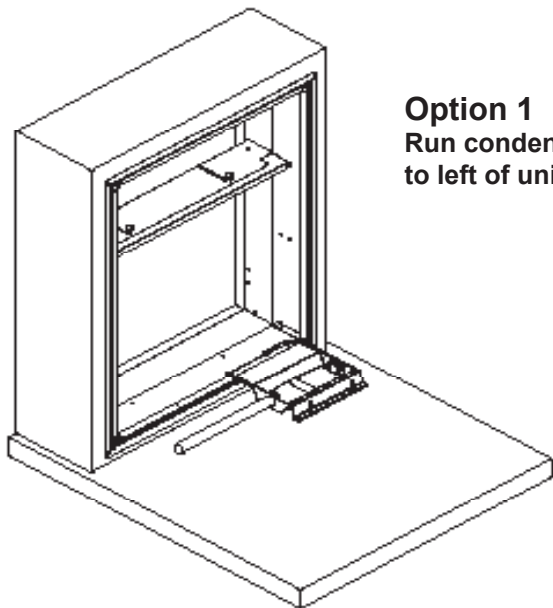
The drain pan comes with both left and right-hand drain connection locations. Determine which of the two connections will be used to drain the condensate. Then, with the factory supplied drain plug, plug the unused opening.

**NOTE** - proper sealant must be applied to the connection to prevent leaks.

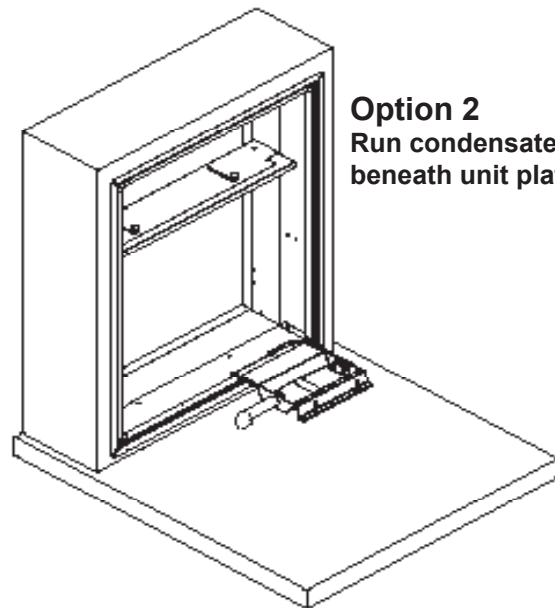


## STEP 5: INSTALL DRAIN LINE

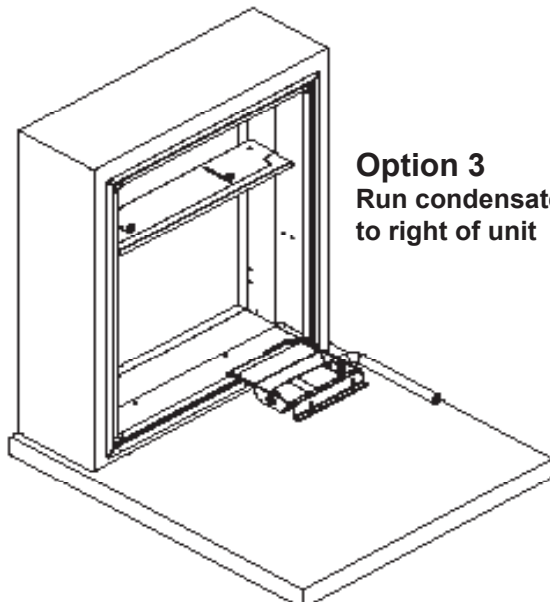
Condensate line routing options are shown below. Choose the one that best suits your installation. Never run the condensate line as shown in Option 4 below, as the drain line will come into contact with the factory-installed isolators beneath the unit.



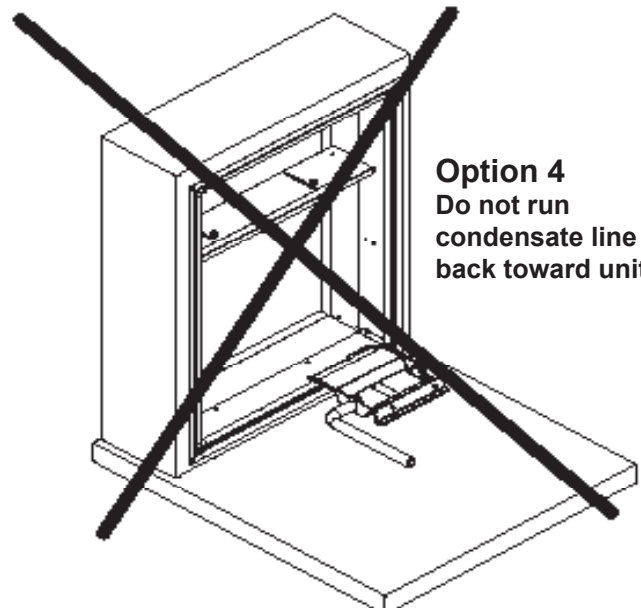
**Option 1**  
Run condensate line  
to left of unit



**Option 2**  
Run condensate line  
beneath unit platform



**Option 3**  
Run condensate line  
to right of unit



**Option 4**  
Do not run  
condensate line  
back toward unit

**IMPORTANT** - The drain pan and line must be kept free from debris. Prior to installing the chassis ensure that there are no blockages in the drain pan or line.



FRIEDRICH AIR CONDITIONING CO.

10001 Reunion Place, Suite 500

(210) 546-0500

[www.friedrich.com](http://www.friedrich.com)