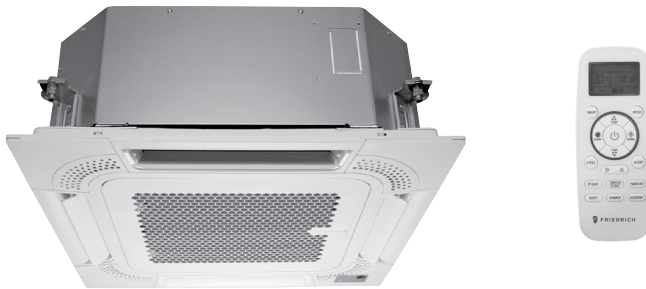


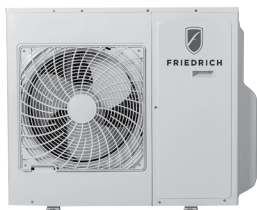


## Friedrich Floating Air® Pro Series Cassette Ductless Heat Pumps



### HEAT PUMPS

230 volt- 9,000 to 24,000 Btu COOLING  
10,200 to 27,000 Btu HEATING



FPHMR18A3A , FPHMR24A3A



FPHMR36A3A



FPHMR42A3A

### FEATURES

- Easy to use *FriedrichGo™* app
- Create customizable, 7-day schedules
- Control with smartphone
- Compatible with Amazon Alexa and Google Home
- 24-hour on/off timer
- *Precision Inverter®* technology (variable speed compressor)
- Soft start compressor
- Natural air flow
- 4-way cooling
- Surge Cool/Heat
- Cooling/Heating/Fan mode
- Dry mode
- Sleep mode
- Independent vane control
- 3 fan speeds
- Ultra-quiet turbo fan
- Evaporator frost control
- Auto restart
- Auto changeover
- DiamonBlue Advanced Corrosion Protection®
- Clean, modern look
- Flexible installation
- ENERGY STAR® qualified models
- Precise air distribution
- Built-in low ambient standard, down to 14°F (Cooling mode)
- Low ambient operation down to -13°F (Heating mode)
- Low temperature compressor start-up protection



# SPECIFICATIONS

PERFORMANCE RATINGS		Multi Zone Cassette - Heat Pumps			
		9k	12k	18k	24k
INDOOR MODEL		FPHFC09A3B	FPHFC12A3B	FPHFC18A3B	FPHFC24A3B
SPECIFICATIONS					
CAPACITY COOLING (RATED)	Btu	9000	12000	18000	24000
CAPACITY HEATING (RATED)	Btu	10200	13500	20400	27000
MOISTURE REMOVAL	Pts/h	1.9	2.5	3.2	5.0
AIRFLOW (HIGH)	CFM	306	471	559	1100
SOUND RATING (MAX.-MIN.)	dB-A	40/28	40/28	40/28	40/28
ELECTRICAL DATA					
POWER SOURCE	V-Hz-Phase	230/208-60-1	230/208-60-1	230/208-60-1	230/208-60-1
POWER AND COMMUNICATION CABLE	No. x AWG	4 x 14AWG	4 x 14AWG	4 x 14AWG	4 x 14AWG
REFRIGERATION SYSTEM					
CONNECTIONS		Flare	Flare	Flare	Flare
LIQUID LINE O.D.	in	1/4	1/4	1/4	3/8
SUCTION LINE O.D.	in	3/8	3/8	1/2	5/8
DIMENSIONS & WEIGHT					
W X H X D	in	22 1/2 x 8 1/2 x 22		33 x 9 3/4 x 33	
NET WEIGHT	lbs	31.9	34	61.8	59.5
SHIPPING WEIGHT	lbs	38.5	40.7	81.6	79.5
PACKAGE DIMENSIONS W X H X D	in	28 3/4 x 11 1/2 x 26		39 1/4 x 37 x 14	39 1/4 x 37 x 14 1/2

PERFORMANCE RATINGS		Multi Outdoor			
		18k	24k	36k	42K
OUTDOOR MODEL		FPHMR18A3A	FPHMR24A3A	FPHMR36A3A	FPHMR42A3A
SPECIFICATIONS					
POWER SOURCE		208-230/60/1	208-230/60/1	208-230/60/1	208-230/60/1
EST. YEARLY OPERATING COST	\$	\$90	\$172	\$259	\$277
RUNNING CURRENT COOLING RATED	A	6.5	8.7	11	17.5
RUNNING CURRENT HEATING RATED	A	7.3	8.7	13	17
POWER INPUT COOLING MIN. - RATED - MAX.	W	1440 (510-2610)	1920 (420-2640)	2520 (700-5000)	4020 (700-5000)
POWER INPUT HEATING MIN. - RATED - MAX.	W	1530 (450-3510)	1920 (420-4020)	3060 (600-6000)	3870 (600-6000)
POWER AND COMMUNICATION CABLE	No. x AWG	4 x 14AWG	4 x 14AWG	4 x 14AWG	4 x 14AWG
DIMENSIONS W x H x D	in	33 7/8 x 26 3/8 x 12 1/4	37 3/8 x 33 x 13 3/8	37 3/8 x 41 3/8 x 13 3/8	37 3/8 x 41 3/8 x 13 3/8
NET WEIGHT	lbs	108	159	186	196
SHIPPING WEIGHT	lbs	119	170	216	225
REFRIGERATION SYSTEM					
REFRIGERANT		R410A	R410A	R410A	R410A
FACTORY PRECHARGE	oz	63	81	106	120
FACTORY PRECHARGE	ft	50	75	100	125
LIQUID LINE O.D.	in	1/4	1/4	1/4	1/4
SUCTION LINE O.D.	in	3/8	3/8	3/8	3/8
MIN./MAX. LINE LENGTH (EACH)	ft	25/82	25/66	25/66	25/66
LINE LENGTH (TOTAL)	ft	164	197	197	262
MAX. HEIGHT DIFFERENCE	ft	49	49	49	49
SOUND PRESSURE LEVEL COOLING	dB	55	59	59	59
SOUND PRESSURE LEVEL HEATING	A	55	59	59	59
OPERATING RANGE COOLING	°F DB	14-115	14-115	14-115	14-115
OPERATING RANGE HEATING	°F WB	-13-75	-13-75	-13-75	4-75
MINIMUM AMPACITY	A	21A	25A	32A	35A
MAX. TD FUSE/BREAKER	A	30A	30A	50A	50A

Your operating costs will depend on your utility rates and use. The estimated operating cost is based on a electricity cost of \$ .12 per kWh. For more information, visit [www.ftc.gov/energy](http://www.ftc.gov/energy).

Models require grille. Sold separately.

Due to continuing research in new energy-saving technology, specifications are subject to change without notice.

## MULTI ZONE CONFIGURATION, AHRI RATINGS

Friedrich Model	AHRI Reference Number	Indoor Type	System Capacity	EER	SEER	High Heat 47 °F	HSPF	Low Heat 17°F
FPHMR18A3A	205150429	Non-ducted Indoor Units	18000	12.50	22.00	18000	11.00	12200
	205150428	Ducted Indoor Units	18000	11.50	19.00	18000	9.60	12200
	205150430	Mixed Ducted and Non-ducted Indoor Units	18000	12.00	20.50	18000	10.30	12200
FPHMR24A3A	204101246	Non-ducted Indoor Units	24000	12.50	22.00	24000	11.00	15400
	204005731	Ducted Indoor Units	24000	12.10	21.00	24000	10.00	15400
	203999079	Mixed Ducted and Non-ducted Indoor Units	24000	12.30	21.50	24000	10.50	15400
FPHMR36A3A	204101247	Non-ducted Indoor Units	32000	12.50	21.00	36000	11.00	23200
	203996910	Ducted Indoor Units	32000	12.00	19.50	36000	10.80	22600
	203999080	Mixed Ducted and Non-ducted Indoor Units	32000	12.25	20.25	36000	10.90	22600
FPHMR42A3A	205141512	Non-ducted Indoor Units	42000	10.50	20.00	42000	10.00	24000
	205141511	Ducted Indoor Units	41000	10.00	18.00	42000	9.50	24000
	205141513	Mixed Ducted and Non-ducted Indoor Units	41500	10.25	19.00	42000	9.75	24000

## ACCESSORIES

### CEILING CASSETTE GRILLES (REQUIRED)

Decorative Grille	
FPCG0912	FPCG182436
Fits FPHFC09A3B FPHFC12A3B	Fits FPHFC18A3B FPHFC24A3B FPHFC36A3B



### REFRIGERATION LINE SETS (REQUIRED)

#### OUTSIDE DIMENSIONS

Floating Air® Pro Multi Zone Outdoor					
FPHMR18A3A	1/4	3/8	T32150	T32350	
FPHMR24A3A	1/4	3/8	T32150	T32350	
FPHMR36A3A	1/4	3/8	T32150	T32350	
FPHMR42A3A	1/4	3/8	T32150	T32350	

### TORQUE WRENCH SETTINGS

Outside Diameter		Torque	
mm	inch	ft-lbs.	N·m
6.35	1/4	13 - 18	17.6 - 24.5
9.52	3/8	25 - 30	33.3 - 41.2
12.7	1/2	40 - 47	53.9 - 64.7
15.88	5/8	45 - 59	61.7 - 80.4

## WALL CONTROLLERS

(OPTIONAL)



FPWC1

FPWC1 Optional wired wall controller for Floating Air® Pro, single and multi zone models. Does not work with FPHSW36A3B at this time. Please check with your Friedrich representative for options.



Friedrich Air Conditioning Co. | [www.friedrich.com](http://www.friedrich.com)