

FRIEDRICH ZONEAIRE® PREMIER

Featuring low GWP R-32 Refrigerant

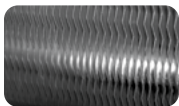
Packaged Terminal Air Conditioners

The quietest PTAC you can buy. Improved performance and design enhancements combine to deliver our most efficient, reliable and quietest standard PTAC.

FEATURES

- Tangential blower wheel for fast, powerful and even air distribution
 - Two permanently-lubricated fan motors for quiet operation
 - EERs up to 12.1; COPs up to 3.6
 - ✓ R-32 refrigerant with low global warming potential (GWP)
 - 2 heating and cooling fan speeds and AUTO mode
 - ✓ Adjustable high/low temperature range limits for reduced energy usage
 - Internal diagnostic program
 - Constant Fan Mode provides continuous fan operation in cooling and heating modes
- FreshAire® IAQ Ready**
- A full complement of Indoor Air Quality Products has been certified through installation and testing to ensure exceptional air quality is achieved when FreshAire® IAQ accessories are added.
 - ✓ Full line of energy management thermostats
 - ✓ Central desk control ready
 - ✓ Compatible with 3rd party energy management systems
 - Reversible indoor air louvers
 - Condensate removal system uses slinger ring technology to cool the coil and increase efficiency
 - Washable air filters
- Modular design ensures easy access to key components
 - Fits standard PTAC sleeve without the added cost of a baffle kit
 - 2 yr. parts and labor warranty; 5 yr. limited warranty. See warranty document for full details.


DIAMONBLUE™
 Advanced Corrosion Protection



Protects the outdoor coil against deterioration and extends the life of the unit especially in harsh coastal environments



THE EXPERTS IN ROOM AIR CONDITIONING

MODEL		PDH09K3SGR3	PDH12K3SGR3	PDH09R3SGR3	PDH12R3SGR3
UPC		724587442212	724587442236	724587442229	724587442243
PERFORMANCE DATA:					
Cooling Capacity	Btu	9700/9400	12100/11900	9800	12000
Cooling Watts		800/780	1040/1000	810	1030
Energy Efficiency Ratio	EER	12.1/12.1	11.6/11.8	12.1	11.6
Reverse Heating Capacity	BTU	8500/8200	10900/10700	8600	10900
Heating Watts		690/670	940/900	690	940
COP		3.6/3.6	3.4/3.46	3.55	3.4
Moisture Removal	Pts.Hr.	2.11	2.75	2.11	2.75
Sensible Heat Ratio		75%	70%	75%	70%
ELECTRICAL DATA:					
Voltage (1 PHASE, 60 Hz)		230/208	230/208	265	265
Volt Range		253-187	253-187	292-239	292-239
Cooling	Amps	3.6/3.9	4.6/4.9	3.1	4
Reverse Heat	Amps	4.0/4.1	4.1/4.3	2.6	3.5
Power Factor		0.99	0.99	0.99	0.99
Compressor LRA		17	30	15	21
Compressor RLA		3.1	4	3.4	3.3
Outdoor Fan Motor	HP	1/14	1/12	1/14	1/12
AIRFLOW DATA:					
Indoor CFM, HIGH		330	341	330	341
Indoor CFM, LOW		282	306	282	306
Outdoor Air		52	52	52	52
PHYSICAL DATA:					
Sleeve Dimensions H x W x D		16" x 42" x 13 3/4" (all models)			
Dimensions with front H x W x D		16" x 42" x 21" (all models)			
Cut Out Dimensions H x W		16 1/4" x 42 1/4" (all models)			
Net Weight	Lbs.	115	119	115	119
Shipping Weight	Lbs.	134	141	134	141
R32 Charge	Oz.	24.7	28.92	24.7	28.9

Due to continuing research in new energy-saving technology, specifications are subject to change without notice.
 Warranty limited to installations in the United States, Puerto Rico, Mexico and Canada only.
 See warranty documentation for full details.

